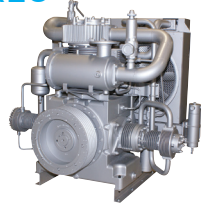


# L-SERIES™ C250/C280

CNG System For Large Fleets



## FEATURES



### COMPRESSOR

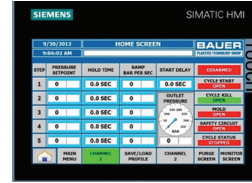
Featuring BAUER's proven C250 and C280, four-stage, air-cooled compressor at the heart of the system.

- › Ideal for sites with low inlet pressure
- › Designed for continuous duty application
- › Extremely durable workhorse



### COST OF OWNERSHIP

Designed for long periods between maintenance intervals and very low cost of ownership. 8000 hrs between ring changes. 30,000 hrs before major overhaul. Lifetime BAUER support.



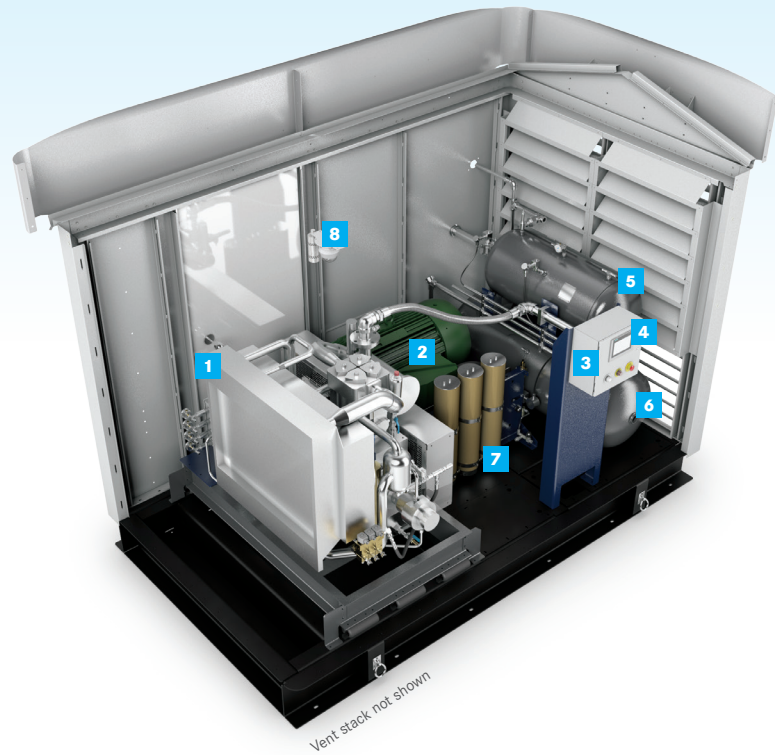
### CONTROL SYSTEM

State-of-the-art control system and intuitive machine interface makes operating the unit simple.

- › Excellent diagnostics
- › Remote interface via smartphone option
- › Online manual and operating / maintenance instructions standard

## BENEFITS

- › **Powerful, totally integrated system** in a compact footprint with on-board storage option.
- › **Standard, pre-engineered system with many customizable options.**
- › **Integrated CNG system, both easy and economical to install.**
- › **Attractive, state-of-the-art design** suitable for placement within public view. Logo awning allows for customer branding.
- › **Easy to maintain with low cost of ownership** makes a BAUER compressor very economical to operate.
- › **BAUER'S legendary performance, quality and reliability are guaranteed** and backed by the best warranty in the industry.



- 1 BAUER C250/280 COMPRESSOR WITH INTERSTAGE TEMPERATURE & PRESSURE MONITORING (C250 ONLY)
- 2 HIGH EFFICIENCY TEFC MOTOR
- 3 NEMA 4 PLC CONTROL PANEL
- 4 TOUCH SCREEN OPERATOR INTERFACE
- 5 INLET BUFFER TANK
- 6 VAPOR RECOVERY TANK
- 7 HIGH PRESSURE DRYING (OPTIONAL)
- 8 INTERIOR LIGHTING AND INFRARED GAS DETECTOR

### SYSTEM FOOTPRINT

DIMENSIONS L X W X H inches (mm)

- › 158" x 96" x 118" (4013mm x 2438mm x 2997mm)

WEIGHT pounds (kg)

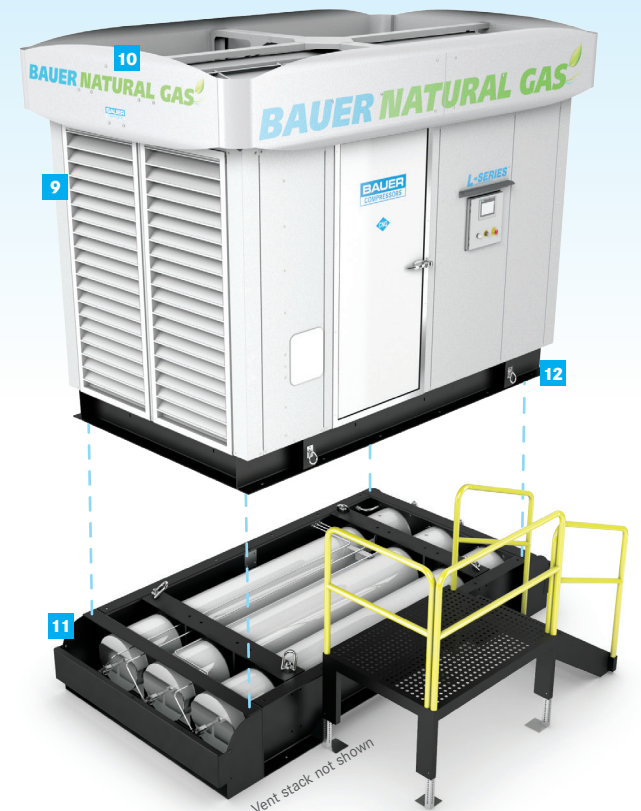
- › 7800 - 12400 lb (3538 - 5625 kg) depending upon model and options

- 9 WEATHERPROOF & RUSTPROOF POWDER-COATED GALVANNEAL ENCLOSURE (10 YEAR WARRANTY)
- 10 CUSTOMIZABLE LOGO AWNING
- 11 SUBFRAME WITH INTEGRATED ASME 3-PACK STORAGE 46 USABLE GGE (OPTIONAL)
- 12 PRECISION FORMED HEAVY-DUTY STEEL SKID

### OPTIONAL FEATURES

- › High Pressure Drying
- › Priority Fill Panel
- › Cell Phone Modem with Remote Notification
- › Compressor Crankcase Heater
- › Enclosure Space Heater
- › Audible Alarm
- › **Integrated Storage Option:** Fully integrated under-skid for 3-pack ASME storage with platform and stairs

Designed in compliance with NFPA 52 and NFPA 70 for Class 1, Division 2, Group D.



## TECHNICAL DATA

Model	Inlet pressure		Final pressure		Capacity			Number of Stages	Running Speed	Motor				
	PSIG		BAR		CFM	M <sup>3</sup> /H	DGE/H			GGE/H	RPM	hp	kW	
	min	max	min	max										max
C250	1	5	0.07	0.34	5000	345	75	127	32	38	4	1050	60	45
C280	1	5	0.07	0.34	5000	345	150	255	64	75	4	1120	125	90

Note: All capacities are referenced to maximum inlet pressure. Capacity is reduced if inlet pressure is less than maximum. Performance tolerance +/- 5%

## OPTIONAL STORAGE CAPACITY

Storage Volume	
Storage equivalent water volume per cylinder	16 CF
Storage volume per cylinder at 4700 PSIG	43 GGE
3 bottle storage volume (total at 4700 PSIG)	130 GGE
3 bottle sequential usable storage volume at 4700 PSIG	46 GGE

## CUSTOMER SUPPORT



GLOBAL SUPPORT



SINGLE SOURCE RESPONSIBILITY



LOW COST OF OWNERSHIP



LIFECYCLE PERFORMANCE

FOR MORE INFORMATION PLEASE VISIT:  
[www.BauerCustomerSupport.com](http://www.BauerCustomerSupport.com)

